



Service.
Quality.
Innovation.



Brand Guide



The nation's largest & fastest-growing regional manufacturer of vinyl windows & doors.

2024



- Developed a comprehensive Branding Guide to maintain logo consistency across all platforms
- Designed catalog cover, internal layouts, and oversaw the final production and delivery
- Designed sales folder, business cards, and pen
- Crafted distinctive clock face



Color Palette

PRIMARY Colors



100% Black
5% Cyan
98% Magenta
100% Yellow
0% Black
PMS116

SECONDARY Colors



75% Black
19% Cyan
0% Magenta
0% Yellow
0% Black
5% Cyan
20% Magenta
0% Yellow
0% Black



Our Logo Style Guide

Horizontal Logo



The UNITED horizontal and vertical logos should only be used on white backgrounds, and should always be surrounded by a minimum area of white space. A margin of clear space, equivalent to the width of the capital E in UNITED is drawn around the logo to create the invisible boundary of the area of isolation. These areas of separation are a minimum and should be increased whenever possible.

Vertical Logo



The one color logo should be used on one color print work and can be applied as an overlay on video and social media.

COLORS

UNITED RED
R215 C29 V38
CS M98 Y 100 K1
#E12726

UNITED BLACK
R20 C01 B12
C70 M07 Y07 K14
#231F20

One Color Logos





Lobby Proposal 2024

A farmhouse exterior facade featuring a large black window



GLASS OPTIONS v7 UPDATE OCT 2023

ENERGY STAR by Windows, Doors, and Slights
CLIMATE ZONE MAP

Low-E, or low-emissivity energy-efficient windows, have a thin transparent coating that reflects heat and UV light, keeping the temperature in your home comfortable. Our double-pane windows contain Low-E coatings in various configurations, optimized for your designated climate zone. Options, however, than an argon gas must also be included to meet energy requirements.



UNITED window & door

9600 Series
Optional Tilt & Lock
Window Operation with WOCD
(Window Operational Control Device)

<p>Vent Bottom Sash</p> <p>Turn both tilt & lock latches inward 120° until it clicks</p>	<p>Open Bottom Sash</p> <p>Lift bottom sash 4" or until it stops*</p>
<p>Tilt Bottom Sash for Cleaning</p> <p>Continue turning the tilt & lock latches inward a full 180°</p>	<p>Restore Sashes & Lock</p> <p>Restore top sash, then twist latches on bottom sash inward a full 180° before restoring bottom**</p>

*Security Feature: With optional Window Operational Control Device (WOCD), bottom and top sashes will open 4" to vent while the window stays locked.

**If either sash is misaligned after restoration, the sash needs to be re-engaged with the balance shoe. Follow the procedure below that applies to your specific situation.

Top Sash: Tilt the top sash. While tilted, bring the sash down as far as it will go. Then restore the sash again. The sash should now be re-engaged with the shoe and no longer misaligned.

- Fabricated Lobby Proposal with 3D renderings
- Photographed images for Lowes.com
- Created Instructional Sheets

Our members **SAVE MORE.**
Our loyalty program is here, and members get more.

Home / Search / united windows

21 results

<p>Multiple Sizes Available</p> <p>United Window & Door PRD Series White Vinyl Replacement Double Hung Window Low-E Argon Double... 4.2 ★★★★★ 28</p> <p>\$194⁰⁰ - \$309⁰⁰ Save up to \$30.00 on select models Installation Available</p>	<p>Multiple Sizes Available</p> <p>United Window & Door PRD Series White Vinyl Replacement Double Hung Window Low-E Argon Double... 4.4 ★★★★★ 28</p> <p>\$209⁰⁰ - \$309⁰⁰ Save up to \$30.00 on select models Installation Available</p>
---	---

Color/Finish Family: White (100), Black (33)

Project Type: United PRO Series Hung Vinyl

Common Size (W x H): 24

Grid Included: 3x3

Frame Material: 24

Price: Save up to \$30.00 on select models

Type: See Options

Interior Color/Finish: See Options

Screen Included: See Options



United Window & Door
May 15, 2024 · 🌐

Today, we extended a warm welcome to [@unitedplateglass](#) to our facilities, continuing to strengthen industry partnerships. Our commitment to our partners lies in equip... See more

Product Innovations

- Black Blinds Between-the-Glass
- Double Interlocking System

BAY WINDOWS

REPLACEMENT

FEATURES

- Bay window units come fully assembled from the factory
- Bay windows can be milled into three-lite configurations at 30° or 45°
- Available in Double Hung, Casement or Picture Combinations

30° 45°

UNITED window & door

3900 Series

Single Hung Window

NEW CONSTRUCTION

FEATURES

- 3 1/2" Frame Depth
- 1/2" Integrated J-Channel with Nail Fin
- 1/2" Warm-Edge Insulated Glass
- Concealed Block & Tackle Balances
- Triple Seal Sashes

OPTIONS

LowE & Argon, WOCD, Nite Locks, Sash Limiter, Custodial Tilt Latch, Drywall PassThru, Primed Extension Jamb, Structural Mullions (For Commercial Applications), Twin & Triple

3900 Black Ext. / Black Int. with Fiberglass Grid
 3800

• Guaranteed to never peel, warp, blister or flake.
 • **Oxyx™** black acrylic coextrusion delivers the most durable black finish in vinyl windows to date.
 • **Brightness™** our solid white semi-gloss vinyl is both beautiful and extremely durable.

UNITED window & door

5900 Series

Double Hung Window

NEW CONSTRUCTION

FEATURES

- 3 1/2" Frame Depth
- 1/2" Integrated J-Channel with Nail Fin
- 1/2" Warm-Edge Insulated Glass
- Concealed Block & Tackle Balances
- Water-Repelling Sloped Sill

OPTIONS

LowE & Argon, Structural Mulls, Primed Extension Jamb, Custodial Tilt Latch, Nite Locks, Multiple Casing Styles, Continuous Head & Sill (for certain combinations/sizes) Twin & Triple

5900 White Ext. / White Int. with Fiberglass Grid
 5800

• Guaranteed to never peel, warp, blister or flake.
 • **Oxyx™** black acrylic coextrusion delivers the most durable black finish in vinyl windows to date.
 • **Brightness™** our solid white semi-gloss vinyl is both beautiful and extremely durable.

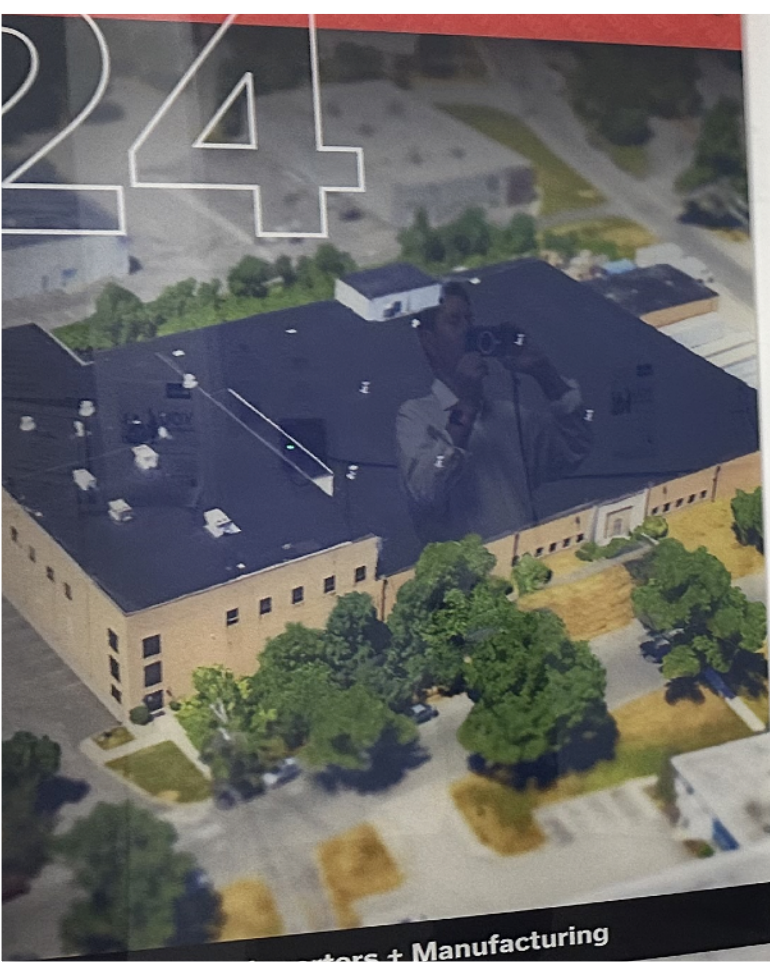


- Developed a series of Rolling Displays custom-fitted visual layouts tailored to enhancing brand visibility
- Designed and structured informative slide decks to communicate key messaging for training sessions
- Produced a suite of sell sheets showcasing various window models, highlighting product features and specifications



- Designed Trade Show Booth, Onyx Logo, and Animation (seen on built-in monitor and window).

- Designed plexiglass signs featuring Tagline: Quality, Service, and Innovation, Mission Statement and arial photos of each building



the **YMCA** FOR YOUTH DEVELOPMENT® FOR HEALTHY LIVING FOR SOCIAL RESPONSIBILITY

MEADOWLANDS YMCA

CHALLENGE

RESPECT YOUR FUTURE SELF.

WINTER JAN 7th – FEB 24th

2019 WINTER PROGRAM GUIDE

the **YMCA** FOR YOUTH DEVELOPMENT® FOR HEALTHY LIVING FOR SOCIAL RESPONSIBILITY

MEADOWLANDS YMCA WE'RE A Y LIKE NO OTHER!

ACTIVATE

MORE THAN YOUR CORE.

For more than a workout. For a better us.

When you join the Y, you're committing to more than simply becoming healthier. You are supporting the values and programs that strengthen your community.

Bryon Hamilton, Founding Member
Photo Courtesy of: Olivia Kang

WINTER SESSION JAN 2ND – FEB 25TH
SPRING SESSIONS 1 & 2 FEB 26TH – APR 22ND
APR 23RD – JUN 17TH

2018 WINTER /SPRING PROGRAM GUIDE



Program Guides

- Designed Covers and layouts with Camps, Swim schedules and pricing

the **YMCA** FOR YOUTH DEVELOPMENT® FOR HEALTHY LIVING FOR SOCIAL RESPONSIBILITY

MEADOWLANDS YMCA

EMPOWER MORE THAN YOURSELF.

REGISTRATION BEGINS
Fall Memberships: OCT 1ST – OCT 31ST / Winter Memberships: NOV 1ST – NOV 30TH
Fall / Early Winter Sessions: SEP 9TH – NOV 3RD / NOV 4TH – DEC 22ND

2019 FALL/EARLY WINTER PROGRAM GUIDE

GATORADE GYM
Four Gatorade Gym Quadrants!

AQUATICS CENTER
Swimming is at the heart of YMCA services and the Meadowlands Y. Pool is the water solution to a long legacy of water fitness. Our 5,200 sq. ft. Aquatics Center features a 1/2 mile, 25-yard competition pool.

YOUTH & TEEN AGES 6-17
BOOSTING BRAINS MOVING BODIES

2019 MEMBERSHIP RATES
EXPLORE

the **YMCA** FOR YOUTH DEVELOPMENT® FOR HEALTHY LIVING FOR SOCIAL RESPONSIBILITY

MEADOWLANDS YMCA 201.955.1300

390 3rd Avenue

OUR COMMITMENT TO CHILDREN'S SAFETY

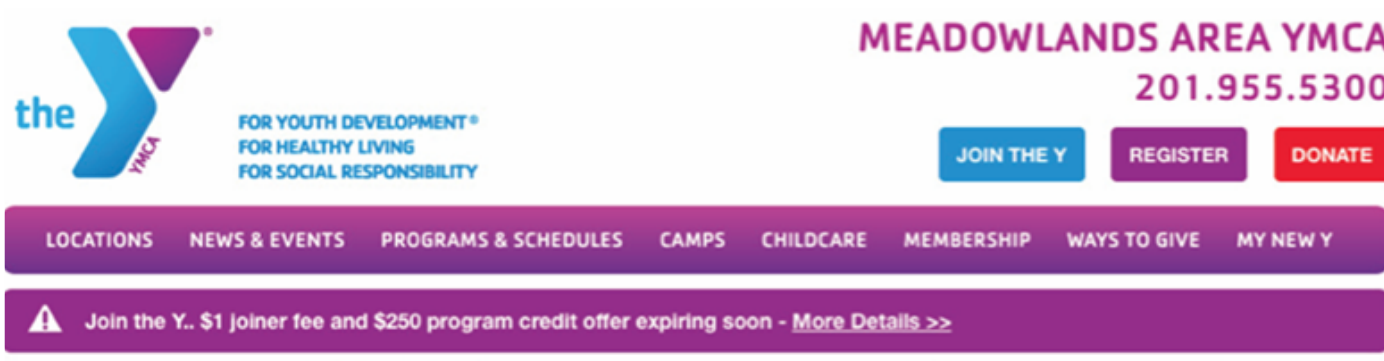
OUR FOCUS

HELP US MAINTAIN OUR CORE VALUES



Mara Center

- Created Logo, Postcards, Signage and Marketing Materials, and Website



The Board of Directors and Staff
Invite You to Celebrate with Us

**98th ANNIVERSARY
GALA**
OCTOBER 18, 2018

MEADOWLANDS
YMCA

6:00PM
Cocktail Reception
7:30pm
Dinner & Program

at the
Il Villaggio
651 Route 17N
Carlstadt, NJ

**DON'T STOP
THINKING
ABOUT
TOMORROW**

Open Bar • Cocktail Attire

**98th ANNIVERSARY
GALA**
OCTOBER 18, 2018

**DON'T STOP
THINKING
ABOUT
TOMORROW**

Master of Ceremonies
Chris Wragge
Co-Anchor CBS 2 News This Morning &
CBS 2 News at Noon

In business and in life, building a better tomorrow starts today.

People in all stages of life, from infants to seniors, can make the best of their tomorrows by pledging a lifelong commitment to health, enrichment...

That starts promise to entire comm...

PRESENTER
JAMES J. TEDESCO
BERGEN COUNTY EXECUTIVE



98th Gala

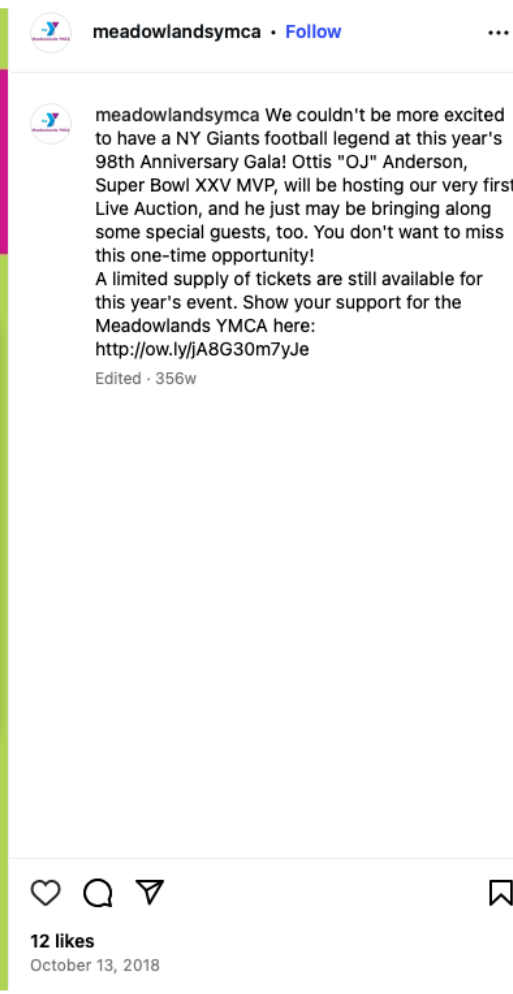
- Created Logo, Invitations, Slide Deck, Mug, Signage and Marketing Materials



**98th ANNIVERSARY
GALA**
OCTOBER 18, 2018

**LIVE AUCTION
Hosted By**

OTTIS "OJ" ANDERSON
NY GIANTS SUPER BOWL XXV





JOIN THE REVOLUTION! **BOOK A FREE RIDE**
See Back for Schedule

ACHIEVE YOUR BEST RESULTS POWERED BY TECHNOLOGY

THE REVOLUTION EXPERIENCE:

- State-of-the-Art LifeFitness IC7 Bikes
- ICG® Connect Technology Unifies Riders by Tracking Group Performances for Team Battles
- Unchain Your Power with Coach by Color Biometrics
- Personalized Stat Tracking
- 133-Inch Projection Screen for Immersive Forward Motion Video
- Hi-Def Surround Sound
- Themed Rides
- Leaderboard Rides
- Easy Online Bike Booking
- Class Packages with Priority Registration
- In-Class Towel Service

Grand Opening SEP 4

Revolution CYCLE STUDIO
UNCHAIN YOUR POWER

MEADOWLANDS YMCA

Book Now: MeadowlandsYMCA.org/RevolutionCycle   




JOIN THE REVOLUTION! **Reserve a Seat Before It's Too Late**

FREE RIDES SEP 17 - 30

Revolution CYCLE STUDIO

MEADOWLANDS YMCA

390 Murray Hill Parkway
East Rutherford, NJ 07073

To Reserve: MeadowlandsYMCA.org/RevolutionCycle

Cycle Studio

- Created Logo, Postcards, Signage, T-shirts, and Marketing Materials

the **Y**

BEST SUMMER EVER™

EARLY BIRD 10% DISCOUNT ENDS APR 21

SUMMER CAMPS OF ALL KINDS!

- SPORTS
- TRAVEL
- FUN & GAMES AT THE Y
- MUSICAL THEATRE
- TEEN
- PRESCHOOL

AGES 3-15

WEEKLY CAMPS START JUN 18

TBD Rutherford
WED, APR 18 • 8 - 8pm

Bergen County Head Start
263 Lafayette Ave.
Cliffside Park
THU, APR 19 • 6 - 8pm

Healthy Kids Day 4/21

SPRING FLING OPEN HOUSE
Meadowlands YMCA
SAT, APR 21 • 11 - 3pm

Meadowlands YMCA
SAT, JUN 2 • 2 - 4pm

MEADOWLANDS **YMCA**.org

BRAINIAC ACADEMY
Rising 1st - 3rd Graders 8:30AM-4:30PM

BRAINIAC ACADEMY

POWER-UP WITH BRAIN-BOOSTING FUN!



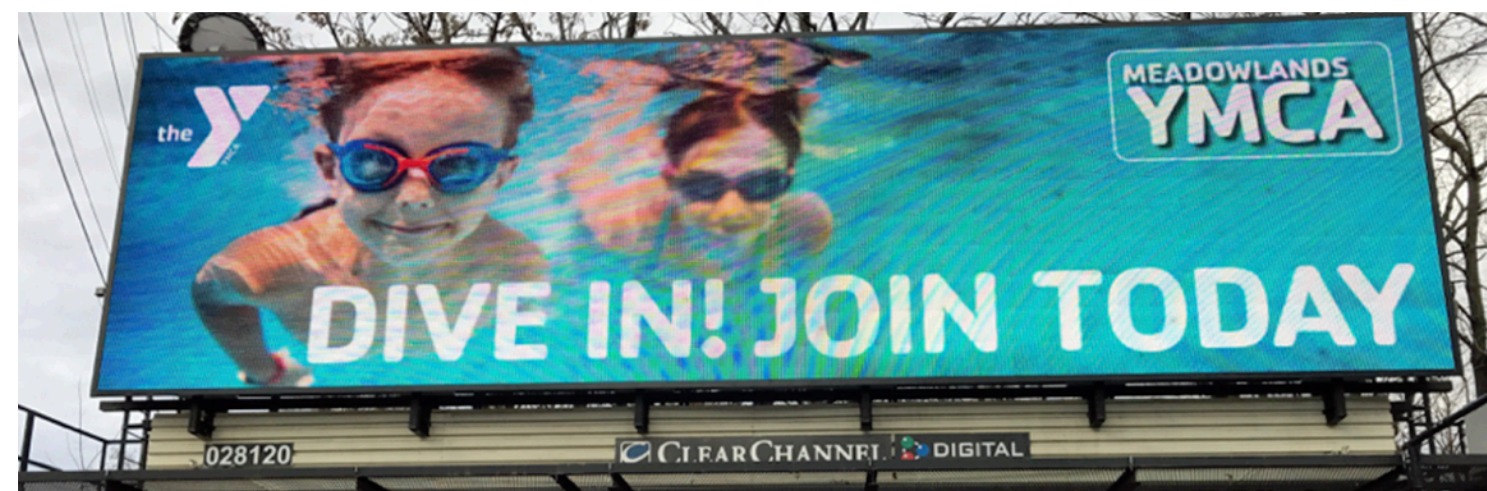
WEEKLY CAMPS START JUN 25th **SPORTS CAMPS** AGES 6-13

WEEKLY CAMPS START JUN 18th **KIDDIE CAMP** AGES 3-5

WEEKLY CAMPS START JUN 25th **TRAVEL CAMP** AGES 5-13

WEEKLY CAMPS START JUN 25th **MUSICAL THEATRE CAMP** AGES 5-14

WEEKLY CAMPS START JUN 25th **COUNSELOR-IN-TRAINING (CIT)** AGES 14-15



TRAVEL CAMPS
QUEST • AGES 5 - 8
JOURNEY • AGES 8 - 11
ODYSSEY • AGES 5 - 13
8:30AM - 4:30PM
Extended hours 7AM - 6:30PM

PRESCHOOL CAMP
KIDDIE CAMP • AGES 3 - 5
Full Day | Half Day

MEET NEW FRIENDS, EXPLORE & PRETEND

ADVENTURE AWAITS!

MEADOWLANDS **YMCA** SUMMER CAMP

the **Y** FOR YOUTH DEVELOPMENT • FOR HEALTHY LIVING • FOR SOCIAL RESPONSIBILITY

EARLY BIRD 10% DISCOUNT ENDS APR 27

BEST SUMMER EVER™

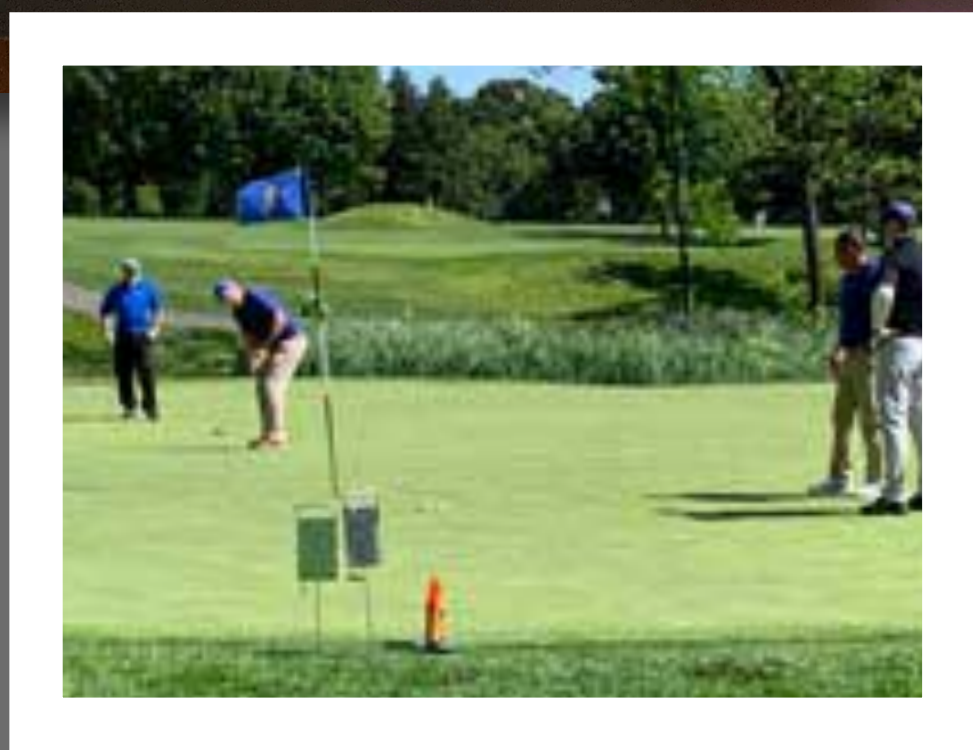
NEW CAMPS ADDED!

2019 SUMMER CAMP GUIDE JUN 17th - AUG 30th

MEADOWLANDS **YMCA**

Summer Camp

- Created Logos, Literature, Facebook Ads, Signage and T-shirts



Golf Outing

- Created Logo, Signage, Literature and Silent Auction Gift Packages



MERCK'S COMMITMENT TO ADDRESSING NON-COMMUNICABLE DISEASES (NCDs)

NON-COMMUNICABLE DISEASES (NCDs) — CANCER, CARDIOVASCULAR DISEASE, DIABETES, MENTAL HEALTH CONDITIONS AND RESPIRATORY DISEASES — ARE A GROWING GLOBAL HEALTH CRISIS.

TOGETHER, WE CAN HELP ADDRESS THE U.N. SUSTAINABLE DEVELOPMENT GOAL OF REDUCING MORTALITY FROM NCDs BY 2030.

Merck, known as MSD outside of the United States and Canada, has a long history of leadership in the prevention and treatment of NCDs. Through our internal initiatives and external partnerships, we aim to help address the burden of NCDs worldwide.

A GROWING GLOBAL CRISIS

According to the World Health Organization (WHO), NCDs are the leading causes of death and disability worldwide, burdening communities and economies around the world. NCDs have reached a point of crisis. While systems in the developed world to address NCDs are relatively robust, NCDs will continue to pose an increasing burden on health and economic development in developing countries where 60 percent of NCD-related deaths take place. To manage this growing global challenge of NCDs it will require collaborative solutions, involving governments, civil society and private companies.

SDG Goal 3: By 2030, reduce by one-third premature mortality from non-communicable diseases through prevention and treatment and promote mental health and well-being.

To help address this challenge, Merck is proud to be a part of Access Accelerated (www.accessaccelerated.org) — a first-of-its-kind, multi-stakeholder collaboration focused on improving NCD care. Involving more than 20 biopharmaceutical companies, the initiative also includes partners such as the World Bank and the Union of International Cancer Control (UICC) to help address the full spectrum of access barriers to NCD medicines in low-income and lower-middle income countries. Access Accelerated will support multi-stakeholder dialogue and begin on-the-ground work to improve NCD prevention, diagnostics and treatment.



"More than 30 years ago, when faced with the human toll from the spread of HIV infection among millions, Merck joined the global fight and talked with others to turn the tide. Together, we transformed a death sentence into a manageable disease for many. Today, we share a collective responsibility to do the same for non-communicable diseases."

— Ken Frazier, Chairman & CEO

ENSURING ACCESS TO SUSTAIN AND SAVE LIVES

Working Together to Improve Access Around the Globe for NCDs

We believe that we have a responsibility not only to discover innovative medicines, but also to ensure in how we improve them, how we use technology, and how we partner with the health community to bring them to the people who need them. All stakeholders — governments, industry, civil society, patients and caregivers — need to engage in creative and collaborative partnerships to address NCDs.

Our access to health approach supports the company's overall mission to discover, develop and produce innovative products and services that save and improve lives around the world. To guide our efforts, we follow our core principles. Access to Health Statement of Guiding Principles, which articulates our approach and applications in the areas of Research and Development, Manufacturing and Supply, Registration, Commercialization, and Community Investment.

Guided by these principles, our company seeks to ensure that our medicines and vaccines in a way that develops our business and meets local needs in a responsible and efficient manner. Part of that approach involves pricing our solutions for NCDs through differential pricing frameworks, taking into account the level of economic development, chronic and public health need. Within countries, particularly in the developing world and emerging markets, we seek to identify innovative strategies for differential pricing or other approaches that allow for flexibility to tailor reach to the most at-risk.

In addition, we understand that access to medicines is a particularly complex issue in low-income countries given the inability of most portions of the population in these countries to afford medicines and the very substantial resource constraints facing the governments. Furthermore, we recognize the role that generic medicines can play in meeting the needs of many people in the developing world, particularly in low-income countries. We have, therefore, adapted a policy of not filing for patents for its medicines and vaccines in low-income countries covered by the World Bank's Access to Medicines and Essential Diagnostics Initiatives.

Through pilot programs in China and the Philippines, we are examining the role of differential pricing and "cash" systems, strengthening in helping to improve access to medicines for



NCDs in underserved populations, particularly low-income groups, in developing countries. The pilots, which are a part of the Access and Affordability Initiative (AAI) — a work stream of the Gates CEO Global Health Roundtable involving pharmaceutical and diagnostics companies and the Bill and Melinda Gates Foundation — are expected to enhance understanding of how intra-country differential pricing, coupled with using primary health systems infrastructure can be a tool to help improve access to medicines.

We are an investment partner in the Access Growth Markets Health Fund, which aims to bring affordable, accessible, quality health care systems to underserved populations in emerging markets in Asia and Sub-Saharan Africa. With a disease focus that includes NCDs such as cardiovascular disease, diabetes, and mental health, the AAI's network of healthcare facilities will expand the reach of needed products and services.

In the US, through MerckHes, we provide our medicines and adult vaccines for free to people who do not have prescription drug or health insurance coverage and who, without our assistance, cannot afford their Merck medicines and vaccines.



PROMOTING HEALTHY LIFESTYLES TO PREVENT NCDs

Focus On Health And Wellness Where We Work And Live

We recognize that maintaining a healthy lifestyle is one of the best ways to prevent many NCDs. Risk factors, such as obesity, poor diet and lack of sufficient exercise are precursors to NCDs and lead to largely preventable diseases and premature deaths.

As we strive to improve and save lives around the world, we also recognize the importance of leading by example. Our company is investing in a culture of wellbeing through workplace-sponsored health promotion, wellness and disease prevention programs. Our comprehensive, integrated platform of health

tools, resources and programs help employees manage their health — getting the right care at the right place and at the right time. Globally, our programs have reached over 50,000 employees in 52 countries.

MerckEngage, a free health support program available in the U.S., offers resources that help U.S. consumers achieve their health goals by reinforcing healthy lifestyle choices, providing disease-specific education, supporting adherence to therapy and facilitating more productive interactions with health care professionals. This also provides support and encouragement for caregivers, who are often engaged in the day-to-day care and treatment decisions of family members and friends.



MERCK

• Designed an 8.5 X 11 (and A4 format) booklet

*Fine Food, Graciously Served by These
Exceptional New Jersey Restaurants and Caterers*

- South Orange ◆ Above Restaurant & Bar
- South Orange ◆ Ariyoshi
- Millburn ◆ Basilico Restaurant
- South Orange ◆ Chef Jesse, Chef to the Stars
- Millburn ◆ Chocolate Works of Millburn
- Millburn ◆ Da Nico
- Cedar Knolls ◆ David Ellis Events
- Summit ◆ Florino Ristorante
- Summit ◆ LaFocaccia Ristorante
- Orange ◆ Libretti's Restaurant
- Maplewood ◆ Lickt Gelato & Sorbet
- Livingston ◆ Lithos Estiatorio
- Livingston ◆ Nero's Grille
- South Orange ◆ Papillon 25
- Chatham ◆ Restaurant Serenade
- Millington ◆ RW Delights, Home of the Heavenly Souffle
- Millburn ◆ Splurge Bakery
- Livingston ◆ THAVMA Mediterranean Grill
- Livingston ◆ The Strip House Restaurant

Please Provide Updated Name(s)

TASTING GALA

Celebrating a Great Cause
with Fine Food

Honoring Provide Name(s) Honoring Provide Name(s)

**Tuesday, May 2, 2017
6:30 PM - 9:00 PM**

WESTMINSTER

Westminster Hotel
550 W. Mount Pleasant Ave. (Route 10)
Livingston, NJ 07039



Celebrating a
Great Cause
with Fine Food



Tuesday, May 2, 2017
Westminster Hotel
Livingston, NJ

FAMILYConnections' TASTING GALA RSVP

Name(s) _____ (as you want to be listed in our next annual report)

Address _____

Phone _____

E-mail _____

I WOULD BE DELIGHTED TO ATTEND AND SUPPORT CHILDREN AND FAMILIES, PLEASE RESERVE:

_____ Tickets @ Donor level \$175 per person \$ _____

_____ Tickets @ Sustainer level \$250 per person \$ _____

_____ Tickets @ Benefactor level \$400 per person \$ _____

ENCLOSED IS MY CHECK MADE PAYABLE TO
FAMILYConnections \$ _____

or

Please accept my payment with a valid credit
Mastercard/Visa/Discover/Amex (circle one)

Name on Card _____

Credit Card Number _____

CW Number (3 digit # on back) _____

Expiration Date _____

Signature _____

or

GO GREEN and purchase your tickets online at
www.familyconnections.org.

or

I/We cannot attend but would like to make a contribution of \$ _____

If you would like your name in the Journal, please include this form with payment in the enclosed envelope by **April 8, 2016**.
Reservations will be held at the door.

Questions?
Contact the Development & Communications Office at 9:
FAMILYConnections is a not-for-profit 501(c)(3) tax-exem

TRIBUTE SPONSOR JOURNAL OPPORTUNITIES

SPONSORSHIP

- Diamond Sponsor \$20,000 Full Page Ad, up to 12 tickets
- Platinum Sponsor \$15,000 Full Page Ad, up to 10 tickets
- Gold Sponsor \$10,000 Full Page Ad, up to 8 tickets
- Silver Sponsor \$5,000 Full Page Ad, up to 4 tickets
- Bronze Sponsor \$2,500 Full Page Ad, up to 2 tickets
- Pearl Sponsor \$1,000 Full Page Ad, up to 2 tickets

JOURNAL ADS	WIDTH	HEIGHT	PRICE
<input type="checkbox"/> Full Page	4 1/2"	7 1/2"	Sponsorship \$400
<input type="checkbox"/> Half Page	4 1/2"	3 3/4"	\$300
<input type="checkbox"/> Quarter Page or Biz Card	4 1/2"	1 3/4"	Under \$300
<input type="checkbox"/> Friends Listing	text only		

FAMILYConnections GUARANTEES INCLUSION OF ADS RECEIVED BY APRIL 3, 2017

- My tax-deductible donation made payable to FAMILYConnections is enclosed.
- In my ad, please use the following congratulatory message to FAMILYConnections (18 Word maximum)

GUIDELINES FOR ARTWORK SUBMISSION

1. Digital Formats

- High resolution (300 dpi) PDF and JPG
- Publisher files are NOT acceptable
- Please avoid using low resolution images downloaded from websites.

2. Clean, Hard Copy Items, such as business cards, should not have pen or pencil markings. Please submit any special instructions on a separate sheet. Please do NOT staple through your artwork. If you must attach items, paper clips are preferable. Thank you.

PLEASE SUBMIT ARTWORK TO
Nancy Wellbrock
Director of Development

FAMILYConnections
7 Glenwood Avenue
East Orange, NJ 07017
Phone: 973-323-3412
Fax: 973-266-1041
nwellbrockfamilyconnections.org

FAMILYConnections
7 Glenwood Avenue
East Orange, NJ 07017

Hope Lives Here
FAMILYConnections

TASTING GALA

Celebrating a Great Cause
with Fine Food

• Designed Gala Logo, Invitation, RSVP and Envelope

CME
Presents

New Approaches to Pediatric Skin and Skin Structure Infections

Program Guide & CME Evaluation Survey

Hyatt Regency Atlanta
Centennial Ballroom II
265 Peachtree Street NE
Atlanta, GA

Mimi-Symposia & Meet the Experts
Parallel and Continuous Presentations in One Room
PLUS a Food Court

This interactive CME activity is supported by an educational grant from **GlaxoSmithKline**.

CME EVALUATION SURVEY

Lecture Series

MOA Differentiating New Drug Class from Currently Available Treatments
(30 minutes; CME credit: 2.0 hr)
8:00 AM, 8:00 AM, 9:00 AM, 10:00 AM

Please rate the extent to which this activity achieved the following learning objectives:

Compare and contrast the mechanism of action and spectrum of activity of currently available therapies for u5SSIs and the new antibiotic class, the pleuromycin, to determine how each can best be used to improve patient outcomes.

Excellent Very Good Good Satisfactory Poor

Please rate the quality of the faculty: **MIKHAIL E. PICHONERO, MD**

Excellent Very Good Good Satisfactory Poor

Total Time spent in activity: _____

Strategies for Managing u5SSIs: Current and Emerging Therapies
(30 minutes; CME credit: 2.5 hr)
9:15 AM, 8:15 AM, 9:15 AM, 10:15 AM

Please rate the extent to which this activity achieved the following learning objectives:

Update knowledge of treatment efficacy, activity, safety, patient preference, and resistance potential for current antibiotic responses when treating patients with u5SSIs.

Excellent Very Good Good Satisfactory Poor

Please rate the quality of the faculty: **JANET E. CASEY, MD**

Excellent Very Good Good Satisfactory Poor

Total Time spent in activity: _____

Importance of Local Topical Wound Care
(30 minutes; CME credit: 50 hr)
9:30 AM, 8:30 AM, 9:30 AM, 10:30 AM

Please rate the extent to which this activity achieved the following learning objectives:

Demonstrate appropriate use of local topical antibiotics, including proper use and application of topical antibiotic ointment, to prevent and/or treat u5SSI and/or other wound healing.

Excellent Very Good Good Satisfactory Poor

Please rate the quality of the faculty: **LAWRENCE C. PARRON, MD**

Excellent Very Good Good Satisfactory Poor

Total Time spent in activity: _____

Professional Exchange

Diagnosing and Selecting Treatment for Office-Based u5SSIs
(30 minutes; CME credit: 50 hr)
8:00 AM, 10:00 AM

Please rate the extent to which this activity achieved the following learning objectives:

In order to improve clinical outcomes, identify skin structure infections commonly encountered in children in outpatient settings to an early diagnosis and treatment.

Excellent Very Good Good Satisfactory Poor

Please rate the quality of the faculty: **SHAN L. BUCK, MD**

Excellent Very Good Good Satisfactory Poor

Total Time spent in activity: _____

Diagnosing and Selecting Treatment for Hospital-Based u5SSIs
(30 minutes; CME credit: 50 hr)
8:00 AM, 10:00 AM

Please rate the extent to which this activity achieved the following learning objectives:

Assess and determine when to hospitalize a child with an acute skin infection in order to properly treat these infections.

Excellent Very Good Good Satisfactory Poor

Please rate the quality of the faculty: **CANDICE E. JOHNSON, MD, PhD**

Excellent Very Good Good Satisfactory Poor

Total Time spent in activity: _____

Factors Contributing to Resistance: Update in the Management of Challenging u5SSIs
(30 minutes; CME credit: 50 hr)
8:00 AM, 10:00 AM

Please rate the extent to which this activity achieved the following learning objectives:

Using knowledge of the process by which selective pressure and gene action result in the development of antibiotic resistance and drug resistance, construct treatment strategies that reverse the risk of resistance in pediatric patients with u5SSIs.

Excellent Very Good Good Satisfactory Poor

Please rate the quality of the faculty: **GARY V. DOZAN, PhD**

Excellent Very Good Good Satisfactory Poor

Total Time spent in activity: _____

Epidemiology of Family and Community Infections
(30 minutes; CME credit: 50 hr)
8:00 AM, 10:00 AM

Please rate the extent to which this activity achieved the following learning objectives:

Apply knowledge of prevalence, risk factors and typical history of pediatric u5SSIs to help prevent and identify u5SSIs in at-risk children.

Excellent Very Good Good Satisfactory Poor

Please rate the quality of the faculty: **JOHN E. MCGOWAN, JR., MD**

Excellent Very Good Good Satisfactory Poor

Total Time spent in activity: _____

Meet the Experts

Please rate the quality of the faculty: _____

Excellent Very Good Good Satisfactory Poor

Please rate the quality of the faculty: _____

Excellent Very Good Good Satisfactory Poor

Overall Rating

Please rate the following content components:

1. I will apply the knowledge/skills I learned	Strongly Agree	Agree	Disagree	Strongly Disagree
2. Courses were objective and independent	<input type="checkbox"/>	<input type="checkbox"/>	<input type="checkbox"/>	<input type="checkbox"/>
3. Course format enhanced achievement of learning objectives	<input type="checkbox"/>	<input type="checkbox"/>	<input type="checkbox"/>	<input type="checkbox"/>
4. Courses were free from commercial bias	<input type="checkbox"/>	<input type="checkbox"/>	<input type="checkbox"/>	<input type="checkbox"/>

If you "Disagree" or "Strongly Disagree," why? _____

INTRON A
(Interferon alfa-2b, recombinant) Injection

Product Monograph for Oncology

Table of Contents

I. Introduction 1

II. Overview of Interferons and INTRON A 7

III. INTRON A in Malignant Melanoma 9

IV. INTRON A in Chronic Myelogenous Leukemia 15

V. INTRON A in Low-grade Non-Hodgkin's Lymphoma 23

VI. INTRON A in Multiple Myeloma 29

VII. INTRON A in Heavy Cell Leukemia 35

VIII. INTRON A in Carcinoid Tumors 37

IX. INTRON A Safety Profile 41

X. Supplemental Uses of INTRON A 45

II. Overview of Interferons and INTRON A

Rationale of Interferons

Interferons (IFN) are a group of naturally occurring proteins that play a central role in the body's defense against viral infections and certain cancers. They are produced and secreted by a number of cells, including fibroblasts, epithelial cells, and leukocytes. Interferons act by inducing a state of antiviral protein synthesis in neighboring cells, thereby inhibiting viral replication and spread.

Types of Interferons

There are three main types of interferons: Type I (including IFN- α and IFN- β), Type II (IFN- γ), and Type III (IFN- ω). Each type has distinct properties and clinical applications.

INTRON A

INTRON A is a recombinant form of Type I interferon (IFN- α 2b). It is used to treat various types of cancer, including malignant melanoma, chronic myelogenous leukemia, low-grade non-Hodgkin's lymphoma, multiple myeloma, and heavy cell leukemia.

INTRON A
Product Monograph for Oncology

Projects In Knowledge

• **Designed Program Guides, Monographs. Slide Kits, and Packaging**

Addressing Clinical Challenges in Symptomatic Prostate Cancer Patients

SYLLABUS

Featuring Newly Released Data

A CME Enduring Material, based on proceedings from a live CME satellite symposium held prior to the AJA annual meeting.

Featuring Newly Released Data

2 convenient formats:
• Complete audio CD case
• Audio CD & printed syllabus

Addressing Clinical Challenges in Symptomatic Prostate Cancer Patients

Chair

Faculty

David Crawford, MD
Professor of Surgery and Radiation Oncology
University of Colorado Health Science Center
Denver, Colorado

Fred M. J. Debnys, PhD, MD
Professor and Chairman
Department of Clinical Oncology
University of Toronto
Toronto, Ontario, Canada

Franklin D. Gillis, MD, FACS
Chairman
Cedars-Sinai Medical Group of San Diego
San Diego, California

John Trachtenberg, MD
Director, Prostate Cancer
Program, Mount Sinai
Professor, Department of Surgery
University of Toronto

Benefits and Risks of GnRH/HRH Antagonists and Antagonists in Symptomatic Prostate Cancer Patients

John Trachtenberg, MD
Director, Prostate Cancer
Program, Mount Sinai
Professor, Department of Surgery
University of Toronto

ACHIEVING A BALANCE

Tips, Resources, and Strategies for Patients With Bipolar Mania

ACHIEVING A BALANCE

Tips, Resources, and Strategies for Patients With Bipolar Mania

With medical commentary by two leading experts in bipolar disorder.

Paul E. Skala, Jr., MD
Professor of Psychiatry
University of Maryland
Chesapeake Medical Center
Chesapeake, MD

Ronald J. Scott, MD
Professor of Psychiatry
University of Maryland
Chesapeake Medical Center
Chesapeake, MD



BILL BILLEC

ART & DESIGN

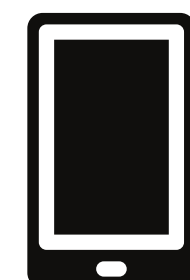
Crisp, Metaphoric, Visual Communication.



billbillec.com



South Orange, NJ



201.306.3141



wbillec@gmail.com



[linkedin.com/in/william-billec/](https://www.linkedin.com/in/william-billec/)